

# DATASHEET

rev. 01 - 4/11/2022

Adjustable long-range diffuser in anodised aluminium

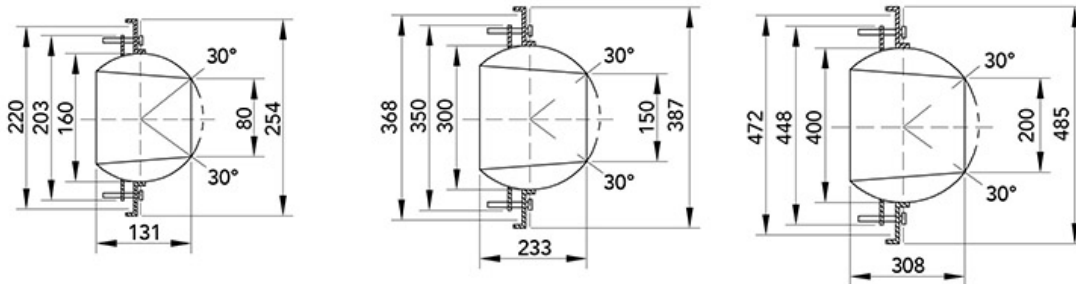
11175020 - 11175025 - 11175030



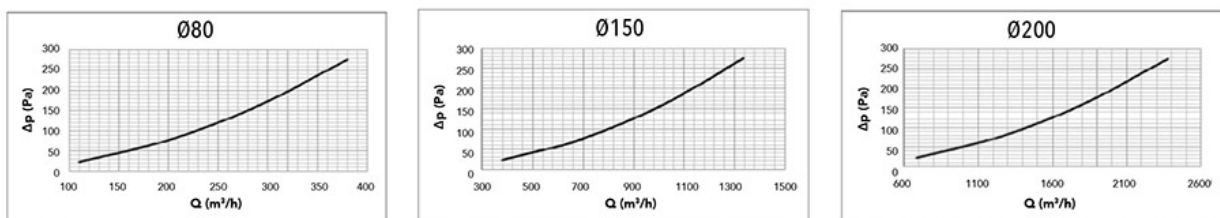
## TECHNICAL SPECIFICATIONS:

- Made of aluminium
- Fastening by means of screws directly on channel
- Anodised aluminium finish
- Installation height 2.4 - 11.5 m

## TECHNICAL DRAWINGS



## FLOW RATE DIAGRAMS



## TECHNICAL DATA

Ak [m <sup>2</sup> ]	Q [m <sup>3</sup> /h] MIN	Q [m <sup>3</sup> /h] MAX	LwA [dB(A)] MIN	LwA [dB(A)] MAX	X(0.25) - Y(0.25) MIN [m]	X(0.25) - Y(0.25) MAX [m]	Dpt [Pa] MIN	Dpt [Pa] MAX
0,0050	60	140	20	40	20	40	10	50
0,0176	250	550	31	58	11,9	26,2	10	50
0,014	480	1030	38	69	14,0	30,1	10	50

## ITEMS

CODE	DESCRIPTION
11175020	ADJUSTABLE, LONG THROW DIFFUSER IN ANODISED ALUMINIUM Ø 80mm
11175025	ADJUSTABLE, LONG THROW DIFFUSER IN ANODISED ALUMINIUM Ø 150mm
11175030	ADJUSTABLE, LONG THROW DIFFUSER IN ANODISED ALUMINIUM Ø 200mm