

# DATASHEET

rev. 01 - 5/10/2022

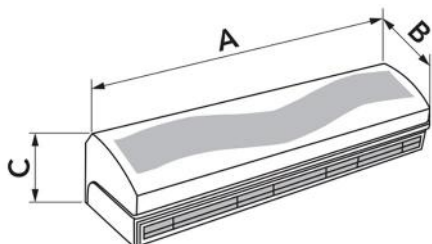
## Centrifugal air curtain with front extraction

12300036 - 12300037



### TECHNICAL SPECIFICATIONS:

- 2 models in white
- Operating temperature + 50°C - 10°C
- 3 speeds operated by remote control or manually
- Air curtains are designed for indoor use
- Front air intake
- The unit must be installed horizontally
- Maximum installation height 3.5 m



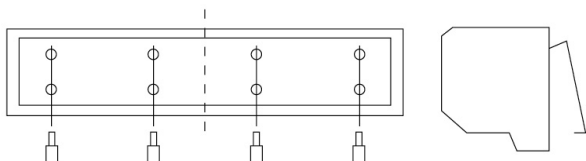
### DIMENSIONS

CODE	MODEL	A [mm]	B [mm]	C [mm]	SUITABLE FOR LARGE DOORS [mm]
12300036	1000	1000	230	212	L.1000 H.3500
12300037	1500	1500	230	212	L.1500 H.3500

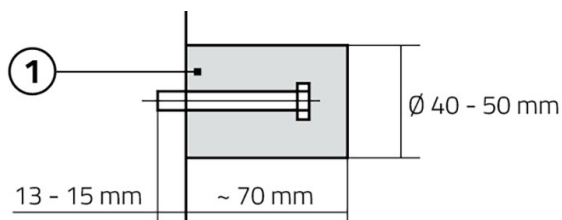
## TECHNICAL DATA

CODE	SUPPLY VOLTAGE [V]	FREQUENCY [Hz]	POWER CONSUMPTION [W]	AIR SPEED AT INLET [m/s]	AIR FLOW RATE [m³/h]	SOUND POWER LEVEL [DB(A)]	REMOTE CONTROL	WEIGHT [kg]
12300036	230 ac	50	296	I:9 II:11 III:12.5	I:550 II:673 III:798	I:48 II:52 III:56	3-speed adjustment	16,9
12300037	230 ac	50	490	I:9 II:11 III:12.5	I:939 II:1148 III:1330	I:52 II:57 III:62	3-speed adjustment	22,6

## INSTALLATION AND START-UP

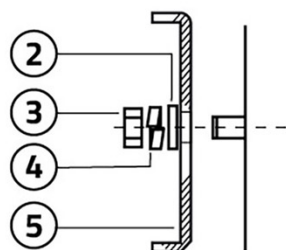


Unscrew the mounting plate and remove it.



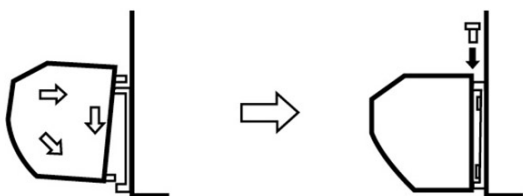
Drill a hole as shown in the instructions and insert the bolt into it, securing it with cement.

[1] Concrete



Position the mounting plate and secure it.

[2] Washer  
[3] Nut  
[4] Elastic washer  
[5] Assembly plate



Install the air curtain on the mounting plate, making sure that it is in the safety position and tighten it with the appropriate screws.

## GENERAL WARNINGS

- For safety reasons, the apparatus has to be installed on a solid wall in such a way as to avoid vibration and excessive noise
- Operating temperature: + 50°C to - 10°C
- Air curtains are designed for indoor use.
- Choose the model according to the installation height: if it is too high, it may adversely affect the operating distance and reduce the effectiveness of the apparatus

- The air is extracted from the front of the unit and blown downwards
- If the door is wider than the air curtain, several units may be installed side-by-side, leaving a space of 20 to 40 mm between one apparatus and the other
- The assembly plate shall be installed on a single, uniform wall
- There has to be a distance of at least 200 mm between the unit and the ceiling
- The unit must be installed horizontally
- The installation height shall not be less than 2.3 m above the ground
- The connection must be preceded by a three-pole switch with a minimum opening of at least 3 mm between the contacts

## ITEMS

CODE	DESCRIPTION
12300036	"AIRFOR3 FRONT"CENTRIFUGAL AIR CURTAIN WITH FRONTAL AIR INTAKE 1000
12300037	"AIRFOR3 FRONT"CENTRIFUGAL AIR CURTAIN WITH FRONTAL AIR INTAKE 1500