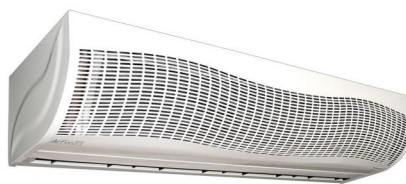


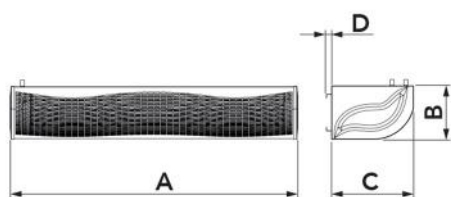
Centrifugal air curtain with front extraction with hot water coil

12450090 - 12450100 - 12450110



TECHNICAL SPECIFICATIONS:

- 3 models in white with speed controller supplied
- 1/2" water exchanger couplings
- Air curtains are designed for indoor use
- Front air intake
- The unit must be installed horizontally
- Maximum installation height 3 m



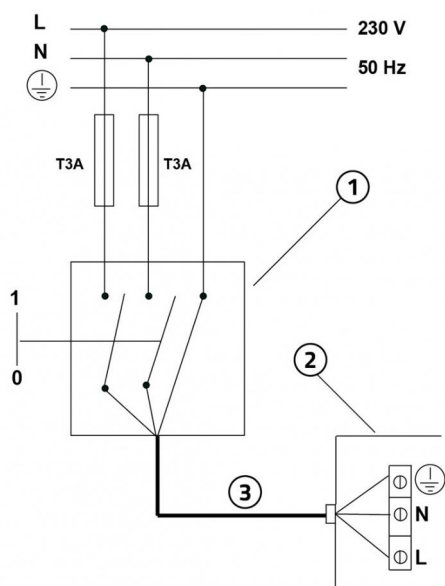
DIMENSIONS

CODE	MODEL	A [mm]	B [mm]	C [mm]	D [mm]	SUITABLE FOR LARGE DOORS [mm]
12450090	1000	1010	280	425	25	L1000 H3000
12450100	1500	1510	280	425	27	L1500 H3000
12450110	2000	2010	280	425	27	L2500 H3000

TECHNICAL DATA

CODE	SUPPLY VOLTAGE [V]	FREQUENCY [Hz]	POWER CONSUMPTION [W]	AIR SPEED AT INLET [m/s]	AIR FLOW RATE [m³/h]	MEASUREMENT OF IN/OUT CONNECTIONS [in]	AVERAGE WATER TEMPERATURE IN/OUT [°C]	HEAT OUTPUT [kW]	AVERAGE WATER FLOW [m³/h]	WEIGHT [kg]
12450090	230 ac	50	192	13	1590	1/2"	70/60	11.4	1	31,9
12450100	230 ac	50	256	13	2120	1/2"	70/60	16.1	1,42	45,1
12450110	230 ac	50	384	13	3190	1/2"	70/60	24.1	2,12	64

SINGLE-PHASE POWER SUPPLY AND WIRING DIAGRAM

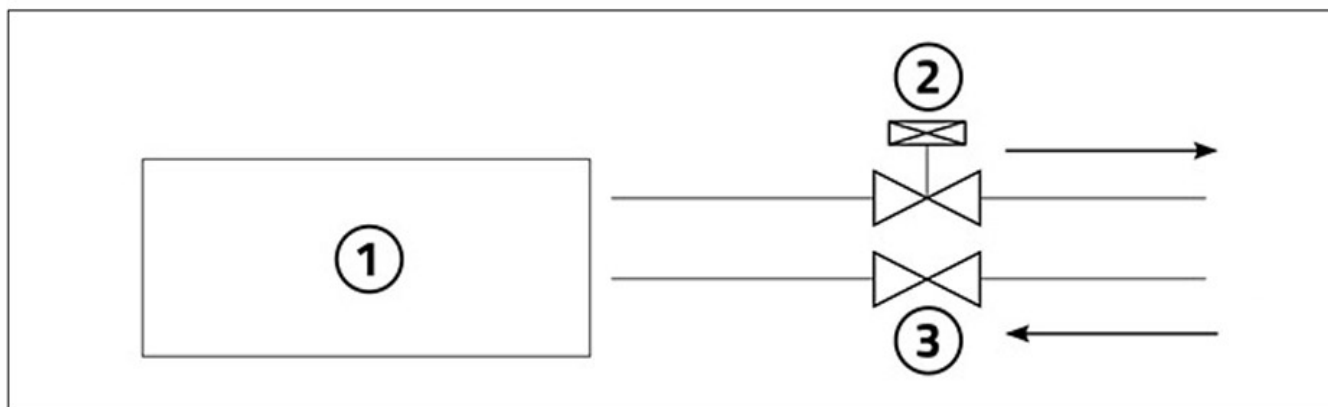


- [1] Omnipolar thermal magnetic protection switch compliant with EN 61508:1
- [2] Power cable 3x2.5 mm²
- [3] Electrical connection box

IMPORTANT!

During the electrical connection, the installer must comply with the polarities indicated by the plate in front of the power supply terminal board.

INSTALLATION PRINCIPLES

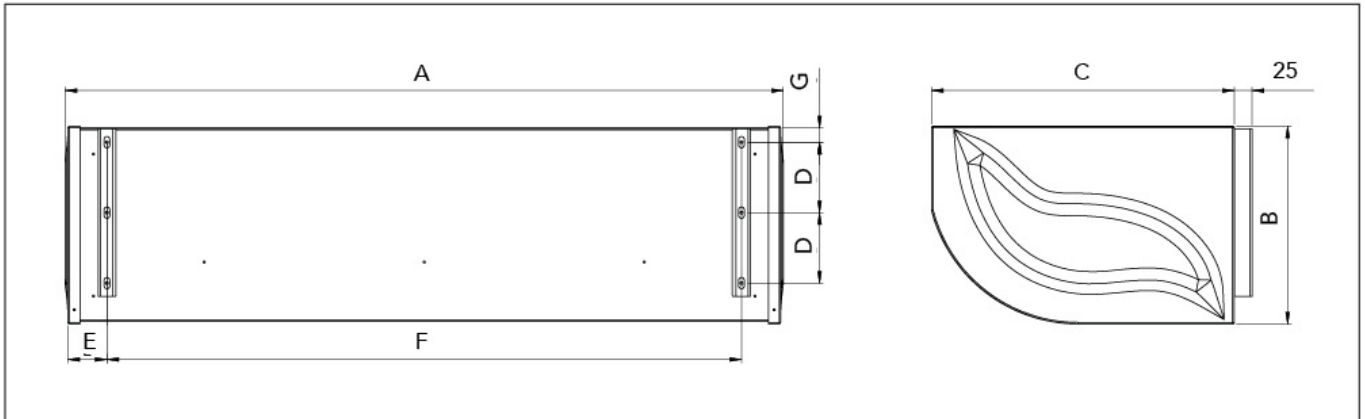


Connect the air curtain to the water system via the appropriate couplers.

The water pressure inside the pipe shall not exceed 0.8 MPa.
For safety reasons, the pipe is resistant to corrosion and heat.
Refer to the illustration for installation.

- [1] AIR BARRIER WITH HOT WATER
- [2] ELECTROMAGNETIC VALVE (not supplied)
- [3] CLOSURE VALVE (not supplied)

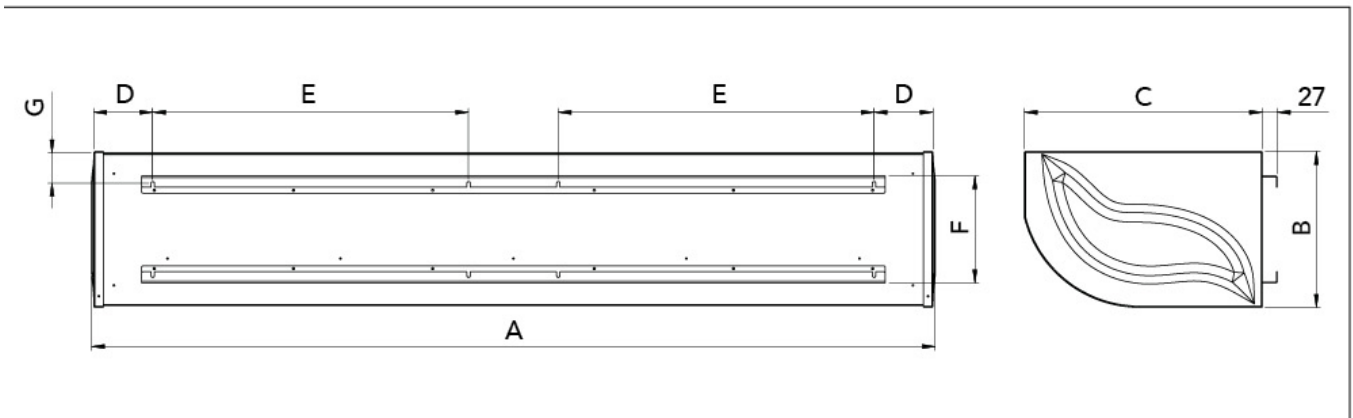
WALL-MOUNTED DRILLING SPACING MODEL 1000



DIMENSIONAL TABLE

CODE	A [mm]	B [mm]	C [mm]	D [mm]	E [mm]	F [mm]	G [mm]
12450090	1010	280	425	99	55	895	20

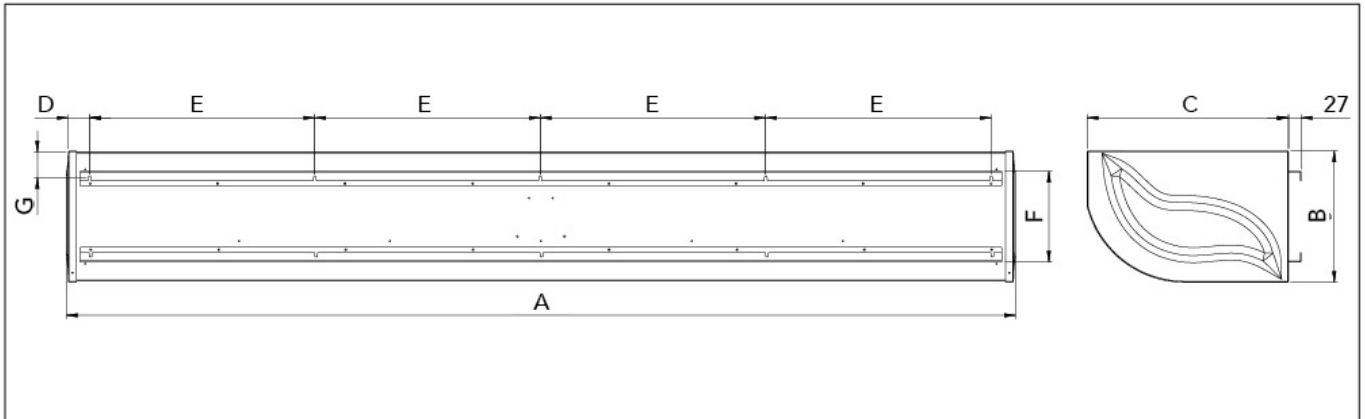
WALL-MOUNTED DRILLING SPACING MODEL 1500



DIMENSIONAL TABLE

CODE	A [mm]	B [mm]	C [mm]	D [mm]	E [mm]	F [mm]	G [mm]
12450090	1510	280	425	105	565	190	55

WALL-MOUNTED DRILLING SPACING MODEL 2000



DIMENSIONAL TABLE

CODE	A [mm]	B [mm]	C [mm]	D [mm]	E [mm]	F [mm]	G [mm]
12450090	2010	280	425	45	478	190	55

GENERAL WARNINGS

- Before connecting the copper piping, check that it is not clogged.
- The operation of the air curtain in heating mode, during winter, can be continuous or controlled by a timer (not supplied)
- If the air curtain is not working properly, turn off the unit and have it checked by a specialised technician.
- Do not use the air curtain in heating mode when the fan is off.
- Regularly clean the air curtain and all its accessories.
- Maintain a minimum distance of 200 mm between the air curtain and the ceiling.
- Install indoors only.
- Install horizontally only at least 2 m above the ground.
- Do not place the device immediately below a power socket.

CONDITIONS OF USE

DO NOT INSTALL the air curtain in the following conditions

- Make sure that it cannot come into contact with rain or suck up water because this could result in short circuits
- In the presence of flammable vapours.
- Temperature above +40°C or below -10°C; relative humidity $\geq 90\%$
- In the presence of explosive mixtures or in the presence of gas.
- Relative humidity higher than 90%

ITEMS

CODE	DESCRIPTION
12450090	"AIRFOR3 H2O" CENTRIFUGAL AIR CURTAINS WITH WATER BATTERY 1000
12450100	"AIRFOR3 H2O" CENTRIFUGAL AIR CURTAINS WITH WATER BATTERY 1500
12450110	"AIRFOR3 H2O" CENTRIFUGAL AIR CURTAINS WITH WATER BATTERY 2000