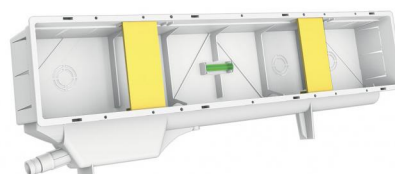


PROFESSIONAL ELITE

built-in installation box with siphon

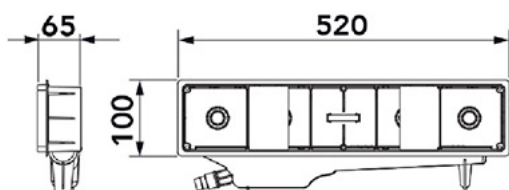
11100117 - 11100117V



TECHNICAL SPECIFICATIONS:

- Right/left reversible tilted rear conveyor with multiple side coupling $\varnothing 16 - \varnothing 20$
- Protection grille
- Adjustable template fastening plates
- Built-in spirit level
- Built-in siphon with hermetic cover
- Anti-condensation cavity
- Anti-plaster cardboard
- Interlocking cover or with screws

DIMENSIONS



PACK COMPLETE WITH

- 1 preparation box with built-in level
- 1 Interlocking cover with holes for screws
- 1 siphon complete with closure plug + non-return valve
- 2 template fixing brackets
- 4 fixing screws for lid
- Anti-plaster cardboard

COMBINATIONS WITH CONDENSATE DRAIN PIPES IN THE CATALOGUE:

Pipe 18/20 Art.11126346 (direct connection)

Pipe 18/20 Art.11126320 (direct connection)

TCR-21 rigid tube (using the MP-TCR-21)

ITEMS

| CODE | DESCRIPTION |
|-----------|---|
| 11100117 | PROFESSIONAL-ELITE READY-TO-PLUMB ENCLOSURE WITH TRAP AND SNAP-ON COVER |
| 11100117V | PROFESSIONAL-ELITE READY-TO-PLUMB ENCLOSURE WITH TRAP AND COVER WITH SCREWS |