

# DATASHEET

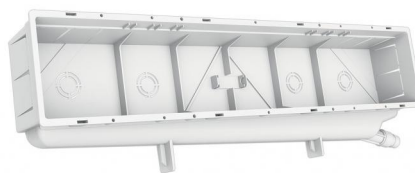
rev. 01 - 16/09/2022

MADE IN ITALY

## PROFESSIONAL CLASSIC

built-in installation box

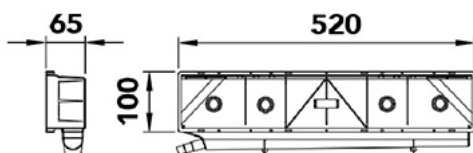
11100095 - 11100095V



### TECHNICAL SPECIFICATIONS:

- Right/left reversible tilted rear conveyor with multiple side coupling  $\varnothing 16 - \varnothing 20$
- Protection grille
- Anti-plaster cardboard
- Interlocking cover or with screws

### DIMENSIONS



### COMBINATIONS WITH CONDENSATE DRAIN PIPES IN THE CATALOGUE:

Pipe 18/20 Art.11126346 (direct connection)

Pipe 18/20 Art.11126320 (direct connection)

TCR-21 rigid tube (using the MP-TCR-21)

### PACK COMPLETE WITH

- 1 preparation box with built-in level
- 1 Interlocking lid
- Anti-plaster cardboard

## ITEMS

CODE	DESCRIPTION
11100095	PROFESSIONAL-CLASSIC READY-TO-PLUMB ENCLOSURE WITH SNAP-ON COVER
11100095V	PROFESSIONAL-CLASSIC READY-TO-PLUMB ENCLOSURE WITH COVER AND SCREWS