

Digital programmable wireless 4 in 1 thermostat
Models: VS10WRF, VS10BRF, VS20WRF, VS20BRF



Quick Guide

for 14.4 MCU,
7.3 (VS20..RF), 10.9 (VS10..RF) ZigBee software version

VI 2020

Introduction

VS10..RF / VS20..RF is a room temperature thermostat that is used for wireless control of iT600 series devices such as: KL08RF wiring centre, TRV radiator valve and RX10RF boiler receiver. In combination with Universal Gateway UGE600 this regulator can be controlled over the Internet using SALUS Smart Home app (Online mode). Without Internet connection (Offline mode) thermostat works locally, but its communication with other devices must be done through the coordinating unit - C010RF. Full version of the PDF manual instruction is available on the website www.salus-controls.eu

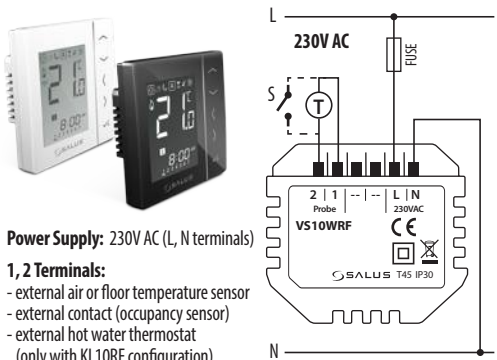
Product compliance

EC Directives: 2014/30/EU, 2014/35/EU, 2014/53/EU i 2011/65/EU.
Full information is available on the website www.saluslegal.com

Safety Information

Use in accordance to national and EU regulations. Use the device as intended, keeping it in dry condition. Product for indoor use only. Installation must be carried out by a qualified person in accordance to national and EU regulations.

Wiring diagram - VS10WRF (white), VS10BRF (black)



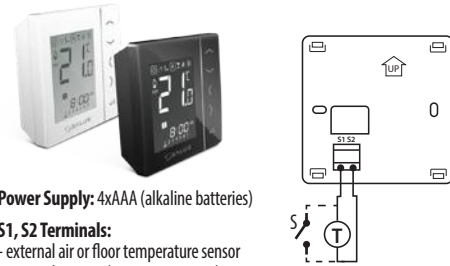
Power Supply: 230V AC (L, N terminals)

1, 2 Terminals:

- external air or floor temperature sensor
- external contact (occupancy sensor)
- external hot water thermostat (only with KL10RF configuration)

Montage: 60mm concealed box

Wiring diagram - VS20WRF (white), VS20BRF (black)



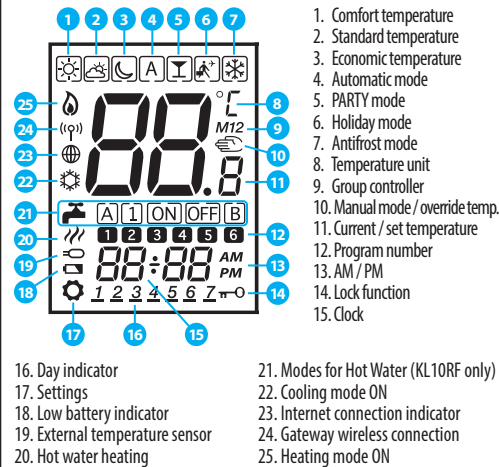
Power Supply: 4xAAA (alkaline batteries)

S1, S2 Terminals:

- external air or floor temperature sensor
- external contact (occupancy sensor)
- external hot water thermostat (only with KL10RF configuration)

Montage: surface mounting (need to remove back cover)

LCD Icon description



Button Functions

Button	Function
↗	Increasing/decreasing temperature or other value
↘	Increasing/decreasing temperature or other value
<	Selecting the operating mode or switching between values
>	Selecting the operating mode or switching between values
✓	Short press - approve selection Hold - enter / exit to or from the menu
⏏	Hold down these buttons to lock or unlock the keyboard
⏏+<	Hold down these buttons to enter installer mode

Select the type of ZigBee coordinator:

Choose a ZigBee coordinator and prepare it to work with iT600 series devices:

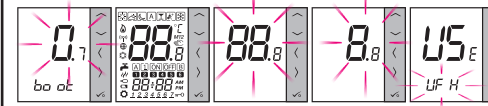
- Online - connected to the Internet via the UGE600 gateway or
- Offline - the ability to connect to the Internet using the UGE600 gateway or
- Offline - without Internet connection with C010RF coordinator



Firstly with the selected coordinator need to install devices, which will be controlled by thermostat. Pairing method of each devices is described in the manual instruction of a particular device.



Installation - first start up



*Numbers 88.8 and 8.8 relate to the software version

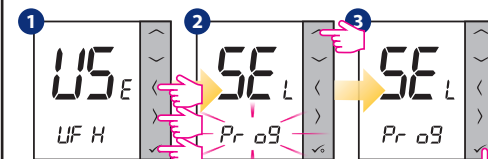
Thermostat starts up in a simplified configuration mode. You can choose to pair with:

- U F H - KL08RF or KL10RF wiring centre (underfloor heating)
- r R d - Thermostatic radiator valve (radiator heating)

Note: Thermostat is set by default as programmable (weekly).

Installation - extended configuration

If the simplified configuration is not suitable, run the expanded configuration by holding 3 keys as below until SEL PROG appears:



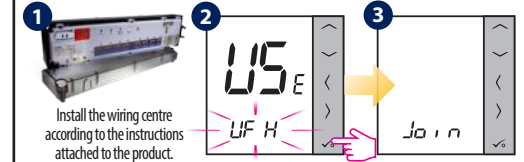
Set the thermostat type:

- P r o g Programmable (weekly)
- d i g t Daily
- w w t r Hot Water timer (works only with KL10RF)

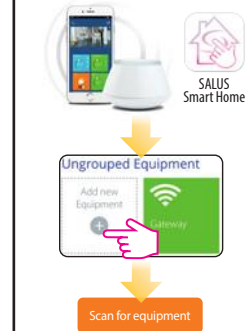
4 After approval of the type of thermostat, choose the type of device to cooperation with:

- U F H Underfloor heating
- r R d Thermostatic radiator valve (radiator heating)
- r E C 1 RX10RF in RX1 mode
- r E C 2 RX10RF in RX2 mode

Installation - pairing with KL08RF / KL10RF wiring centre



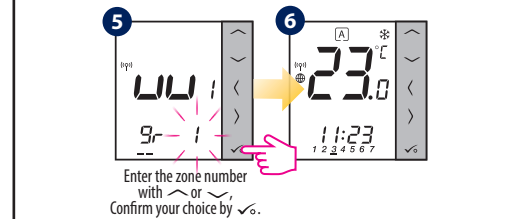
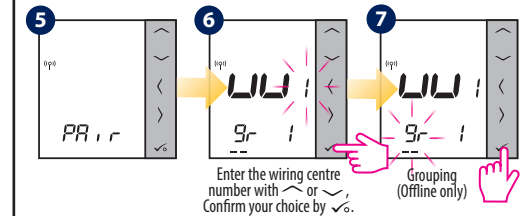
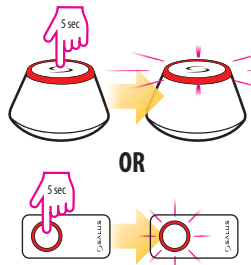
4 Online



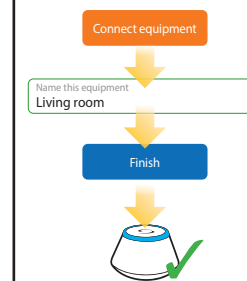
Offline

WARNING!
Do not use C010RF coordinator with UGE600 simultaneously.

Open the ZigBee network

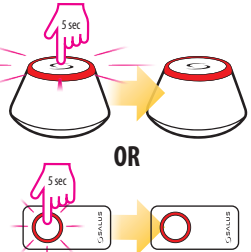


11 Online



Offline

Close the ZigBee network



Pairing thermostat with TRV in Online mode

WARNING! You can connect up to 6 heads to one thermostat.

- Install the TRV on the valve according to the instructions attached to the product.
- Select the device type - TRV.
- Join
- SALUS Smart Home
- High Street Apartment
- Home, Equipment, Settings, Help, My Status
- All equipment, OneTouch, Gateways
- Ungrouped Equipment, Add new Equipment, Gateway, Scan for equipment
- PR 1 r
- 0 TRVs on this thermostat
- Connect equipment
- Name this equipment Living room
- Finish
- Open the tab with the main parameters of the thermostat, set to work with TRV.
- Select TRV(s) for Living room
- 1 TRVs on this thermostat

Pairing thermostat with TRV in Offline mode

WARNING! You can connect up to 6 heads to one thermostat.

- Install the TRV on the valve according to the instructions attached to the product. Hold the button for 10 seconds. The LED on the head should start to blink red.
- UF H
- PR 1 r
- Join
- Open the ZigBee network
- WARNING!** Do not use CO10RF coordinator with UGE600 simultaneously.
- Device is paired with coordinator, diode on the TRV will start to blink orange.
- Diode on the TRV will light up once green and stop blinking.
- TRV has been added.
- Thermostat will go to the home screen.
- Close the ZigBee network.

Pairing thermostat with RX10RF boiler receiver

1 Install the RX10RF boiler receiver according to the instructions attached to the product. Choose proper mode configuration with RX1/RX2 switch inside of RX10RF, then prepare regulator for pairing.

WARNING! In network coordinator can work only with 1 receiver in RX1 mode and 1 receiver in RX2 mode.

- Run thermostat in **extended configuration mode** and select the device type:
 - RX10RF in RX1 mode
 - RX10RF in RX2 mode
- Online: Scan for equipment
- Offline: Do not use CO10RF coordinator with UGE600 simultaneously. Open the ZigBee network.
- Online: Connect equipment
- Offline: Close the ZigBee network

Identification of paired devices

Enter the installer mode, select code "00" and confirm it with ✓ button.

- 23.0, 11:23
- 00, PS UU
- 10, id
- LED diodes on the devices connected to the thermostat will start to blink.
- 10, id
- 23.0, 11:23

Press ✓ to exit the test menu.

Temperature change

To set the temperature, press ^ or v, and then confirm it with ✓ button.

- 21.0, 11:23
- 23.5, 11:23
- 21.0, 11:23

Note: If thermostat works in AUTO mode, then the overwritten temperature will be maintained until next program. In manual mode and antifrost mode temperature change is permanent.

Factory Reset

If you have made an error, need to change your thermostat parameters or want to return to the factory settings, please follow steps below.

Note: This action will permanently remove all your settings.

- 23.0, 11:23
- 00, PS UU
- 47, PS UU
- dE L, S
- AE S, S
- US E, UF H